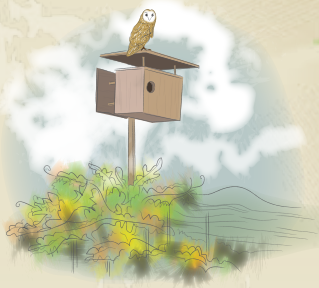


SUSANNA'S VINEYARD

Susanna's Vineyard was originally an apple orchard owned by the Silveira family, who had called the land home for over 50 years. In 2005, Lynn gifted the 20-acre property to Anisya. Named after her grandmother Susanna, the land was transformed in 2006 with the planting of seven Pinot Noir clones and two Chardonnay clones—chosen for their optimal compatibility with the unique soil composition. Located just a few miles from Quail Hill, Susanna's Vineyard enjoys the prestigious trifecta of appellations: Sonoma Coast, Russian River Valley, and Green Valley.

CLIMATE & SOIL

Susanna's slope gently rolls from back to front with an almost due east aspect. As the early morning fog breaks, the vines are bathed in the warming embrace of the rising sun. The afternoon heat is balanced by the slope's longer shadows and the cooling effect of westerly winds pouring in across the Sebastopol Hills—arriving two hours earlier than at Quail Hill. The well-drained site is comprised of Goldridge fine sandy loam and Sebastopol sandy loam soils, both derived from weathered sandstone, making it ideal for growing ultra-premium Pinot Noir and Chardonnay grapes.



OWL BOXES

Owl boxes have been installed at a ratio of one for every two acres at all our vineyards. This high density allows for owls, who don't typically hunt directly beneath their home, to cover the entire vineyard by overlapping territories and hunting under each other's boxes. Gopher mounds, which earlier pock-marked this entire property, have become a rare site as the Barn Owls' favorite staple. This has allowed us to permanently cover crop the vineyard, wall to wall, with native California bunch grasses.



0 50 100 150 200
SCALE IN FEET
SCALE DOES VARY IN PERSPECTIVE

PINOT NOIR
CHARDONNAY

GRAVENSTEIN HIGHWAY 116

BLOCK 1

Pinot Noir
Acres: **1.59**
Vines: **2,894**
Clone: **97 Swan**
Rootstock: **101-14**
Planted: **2006**

BLOCK 2

Pinot Noir
Acres: **1.47**
Vines: **2,672**
Clone: **Calera**
Rootstock: **101-14**
Planted: **2006**

BLOCK 3

Pinot Noir
Acres: **1.41**
Vines: **2,554**
Clone: **Quail Hill Select**
Rootstock: **3309**
Planted: **2006**

BLOCK 4

Pinot Noir
Acres: **1.47**
Vines: **2,673**
Clone: **Dehlinger Swan**
Rootstock: **101-14**
Planted: **2006**

BLOCK 5

Pinot Noir
Acres: **1.01**
Vines: **1,833**
Clone: **Quail Hill Vineyard Swan**
Rootstock: **101-14**
Planted: **2006**

BLOCK 6

Chardonnay
Acres: **1.92**
Vines: **3,494**
Clone: **Mt. Eden, Old Wente**
Rootstock: **101-14, 3309**
Planted: **2006**

BLOCK 7

Chardonnay
Acres: **1.40**
Vines: **2,544**
Clone: **Old Wente**
Rootstock: **3309**
Planted: **2006**

BLOCK 8

Chardonnay
Acres: **2.21**
Vines: **4,006**
Clone: **Old Wente**
Rootstock: **420A**
Planted: **2007**

BLOCK 9

Chardonnay
Acres: **1.09**
Vines: **1,987**
Clone: **Old Wente**
Rootstock: **420A**
Planted: **2007**

BLOCK 10

Chardonnay
Acres: **1.65**
Vines: **2,998**
Clone: **Old Wente**
Rootstock: **101-14**
Planted: **2007**

BLOCK 11

Chardonnay
Acres: **1.35**
Vines: **2,465**
Clone: **Old Wente**
Rootstock: **101-14**
Planted: **2007**

BLOCK 12

Pinot Noir
Acres: **1.79**
Vines: **3,242**
Clone: **Mt. Eden**
Rootstock: **3309**
Planted: **2006**

BLOCK 13

Pinot Noir
Acres: **1.04**
Vines: **1,898**
Clone: **Hyde Calera**
Rootstock: **101-14**
Planted: **2006**